

MYRTLE RUST

If you see it...report it!

(Photo: Dr Angus Carnegie © I&I NSW)



**Myrtle Rust has not established in Tasmania...
...and we want it to stay that way.**

Species that can be infected include eucalypts, teatrees, paperbarks, willow myrtle and bottlebrush

Do NOT collect samples as this may spread the disease. But please:

- Take a photo
- Note the location - GPS is ideal but a description will help
- Tie a ribbon or some other marker to the plant
- Report your sighting as soon as you can to:

DPIPWE's emergency plant pest hotline

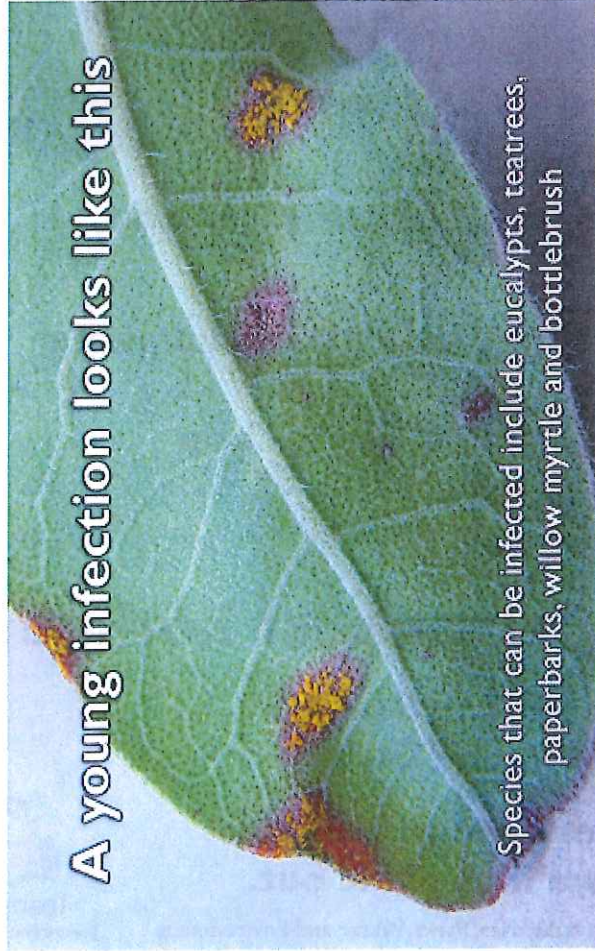
☎ 1800 084 881 (all hours)

or to the Parks and Wildlife Service

**If you're not sure what you've seen is myrtle rust,
please report your sighting and we'll check it out.**

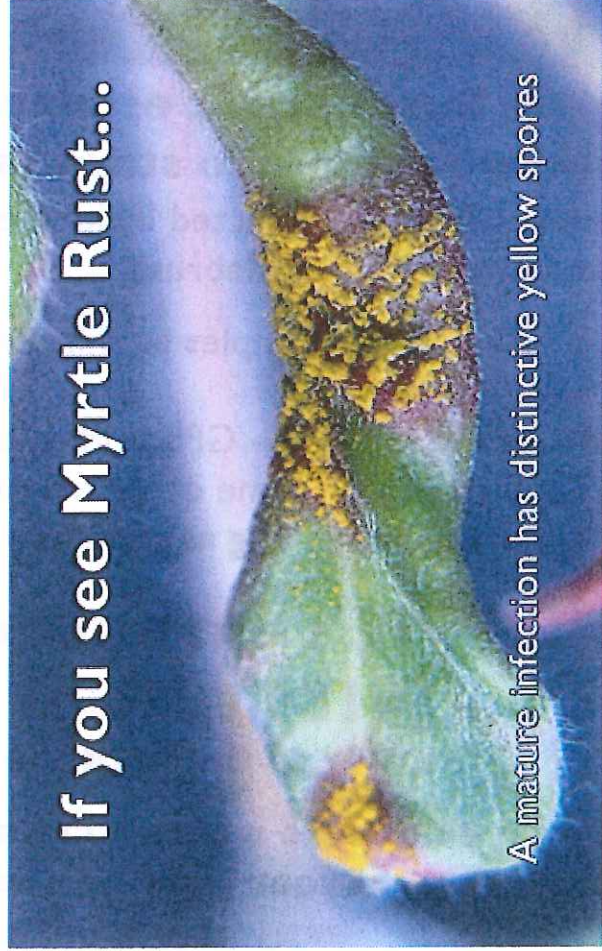
Department of Primary Industries, Parks, Water and Environment

A young infection looks like this



Species that can be infected include eucalypts, teatrees, paperbarks, willow myrtle and bottlebrush

If you see Myrtle Rust...



A mature infection has distinctive yellow spores

**Myrtle Rust has not established in Tasmania...
...and we want it to stay that way.**

Do **NOT** collect samples as this may spread the disease.
But please:

- ◆ Take a photo if possible
- ◆ Note the location - GPS is ideal but if not a description of your sighting will help
- ◆ Tie a ribbon or some other marker to the plant
- ◆ Report your sighting as soon as you can to:

DPIPWE's emergency plant pest hotline
☎ 1800 084 881 (all hours)
or to a **Parks and Wildlife Officer** or
your nearest **Park Visitor Centre**

**If you're not sure what you've seen is myrtle rust,
please report your sighting and we'll check it out.**

Department of Primary Industries, Parks,
Water and Environment

(Photos: Dr Angus Carnegie © I&J NSW)

